



1

## Start

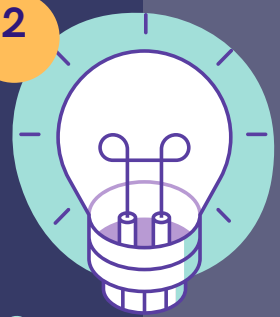


You'll contact Meraki.  
Meraki invites you for an intake.  
You will work at Meraki for 1 to 4 days, in consultation (building up hours is possible).  
50% of your time for own business-50% for the foundation.

## Help with starting your business

3 months training to write/create a business plan.  
Coaching every 2 weeks.  
You become a member of the foundation.  
You work together and get help from fellow entrepreneurs.

2



3

## Money and social benefits



You are willing to start small, without any investment. Any income you earn while on social assistance will be deducted from your benefits. Within the foundation, you can save money for your business, and you will continue to receive your benefits each month.

## Making money

You start as soon as possible.  
After 3 months we aim for € 100 per month.  
You will look for your own customers (with our help).  
We help you find a part-time job in order to provide you with a financial base/foundation.

4

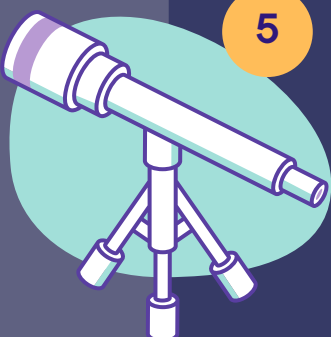


5

## Program

You will learn:

- administration
- marketing plan
- presentations
- using social media
- create tenders and invoices
- rules in the Netherlands, and much more



## Financial agreements

You invoice on behalf of the foundation. The money goes to the foundation. You pay €50 per month as a contribution to the foundation's fixed costs. This will be reconciled with your revenue at the end of the year.

6

